

Project:	Date: 3/22/2024
Window Name:	
Quantity:	1

Function	Window Style:	Casement
	Operability:	Operable Window - Able to Open
Security	Glass Level:	FB4 (UL 3) - Handguns
	Frame Level:	Armored + Ballistic
	Lock System:	Mottura 47.25 Multi-Point
Design	External Cladding:	Painted Eng. Wood
	External Finish:	RAL 9011 Matte
	Internal Cladding:	Painted Eng. Wood
	Internal Finish:	RAL 9011 Matte
	Hardware Color:	Black
	Window Frame Finish:	RAL 9011
	Window Handle:	Karcher Black
	Glass Finish:	Clear

		Inches	Millimeters
Outer FRAME SIZE	Frame Width	29.5	749
	Frame Height	47.25	1200

Important Notes on Sizing:

1. You must have a Rough Opening (RO) adequately larger than the frame size listed above
2. Without an adequate RO, your window may not have enough room for adjustment and may malfunction
3. For opening windows, your Rough Opening should be at least 1" wider, and 3/4" taller than frame size



WINDOW HANDING

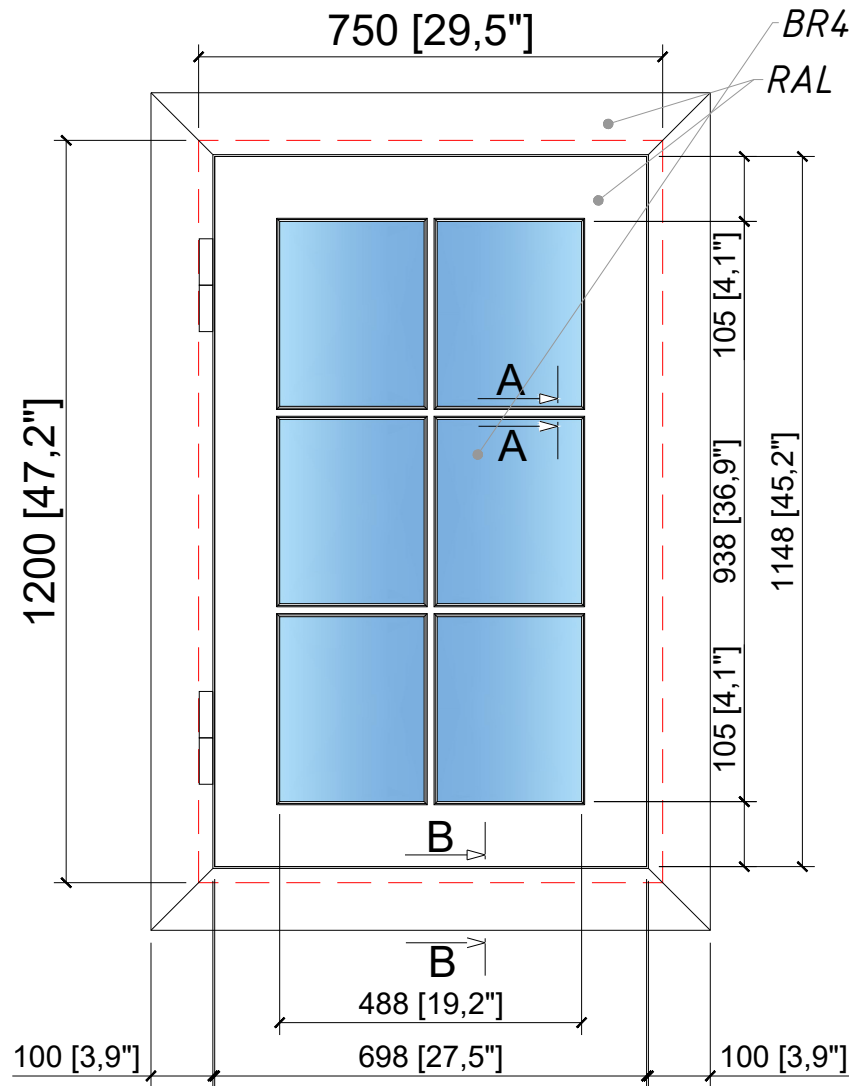
Diagram of View From Above:



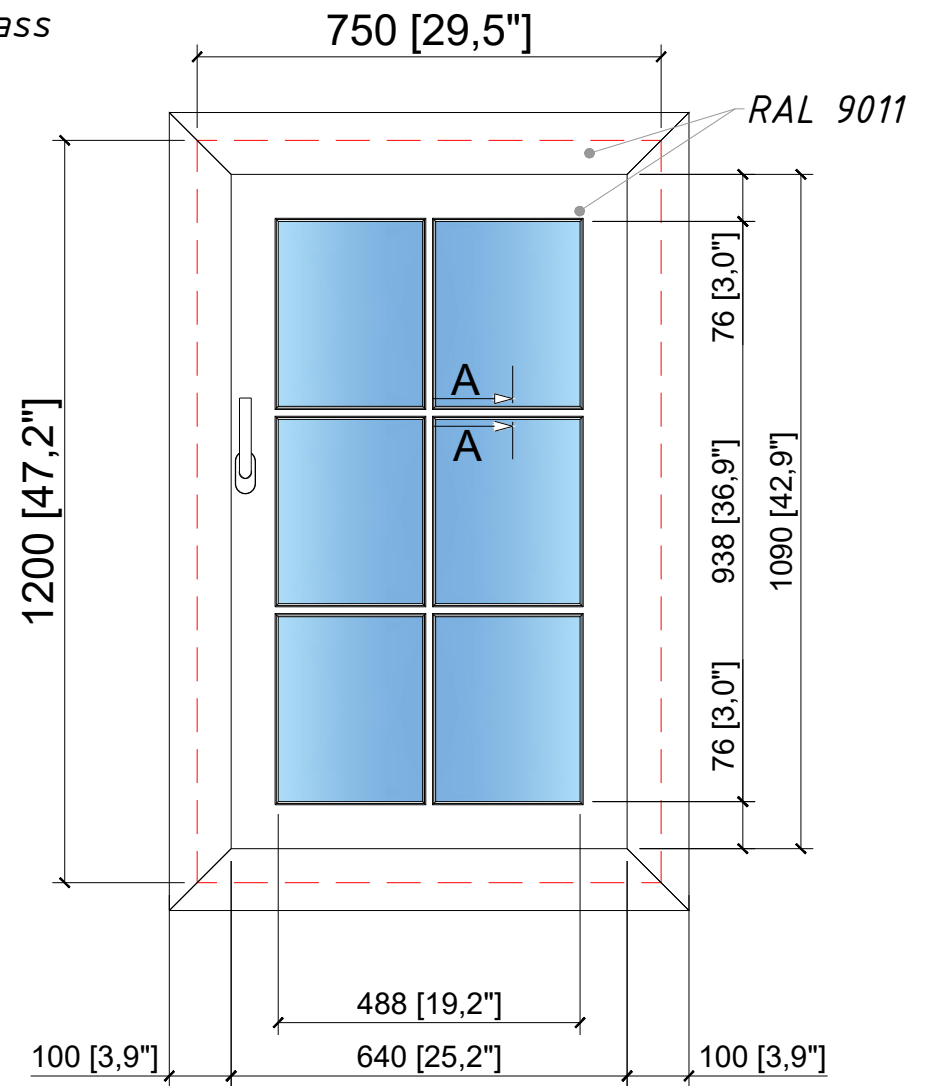
Notes:

This door is approved for production, as specified in this document and the following shop drawings, by:

External elevation



Internal elevation



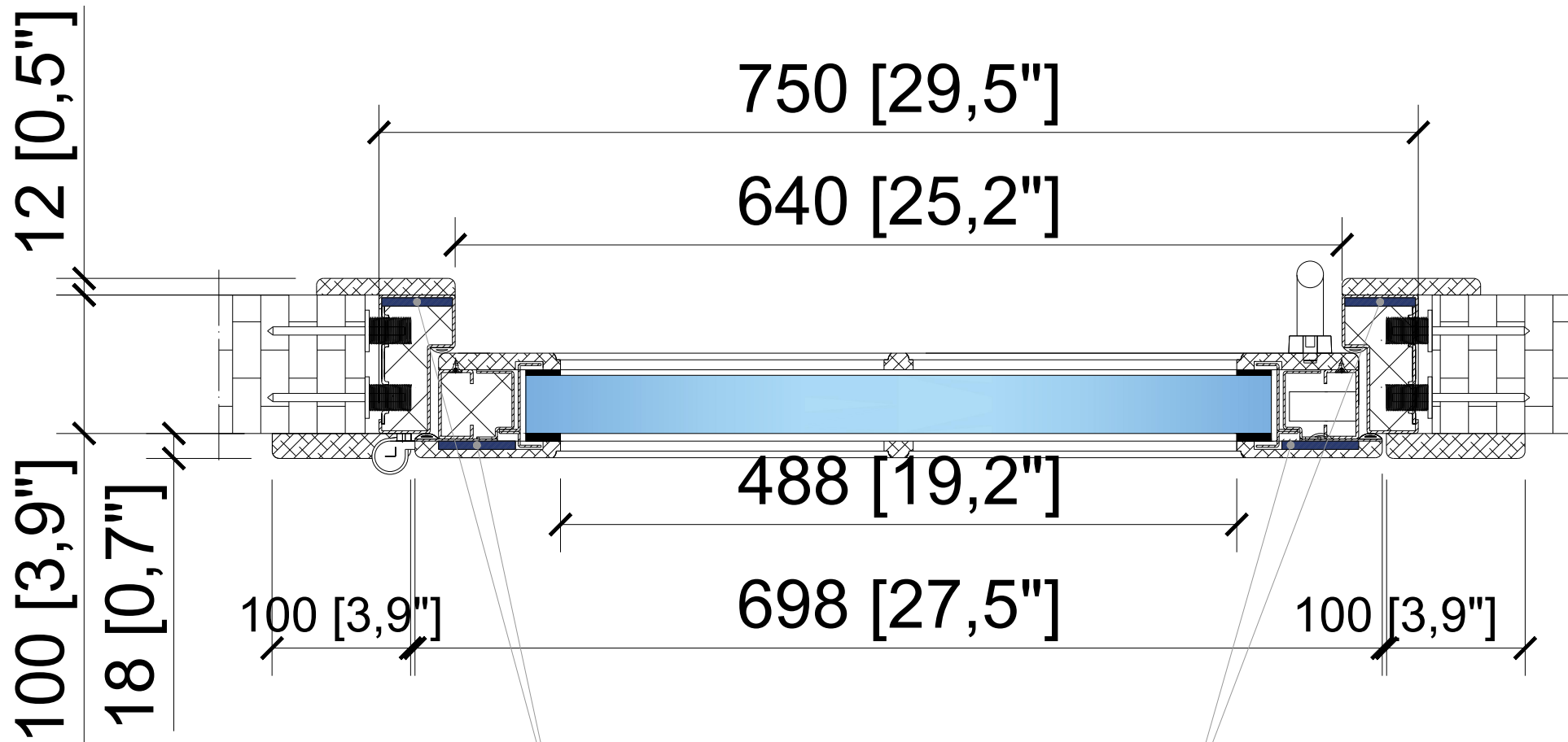
Outward opening:



External and Internal Elevations of the Door

Sheet 1 No. of sheets 4 SCALE: NOT TO SCALE

DRAWN BY: M.B.	REQUESTED BY:	DATE: 19 March 2024	CAD dwg Ref. No. Door design FDE0104V2
			CLIENTS REF. NUMBER: Front Upper Bathroom

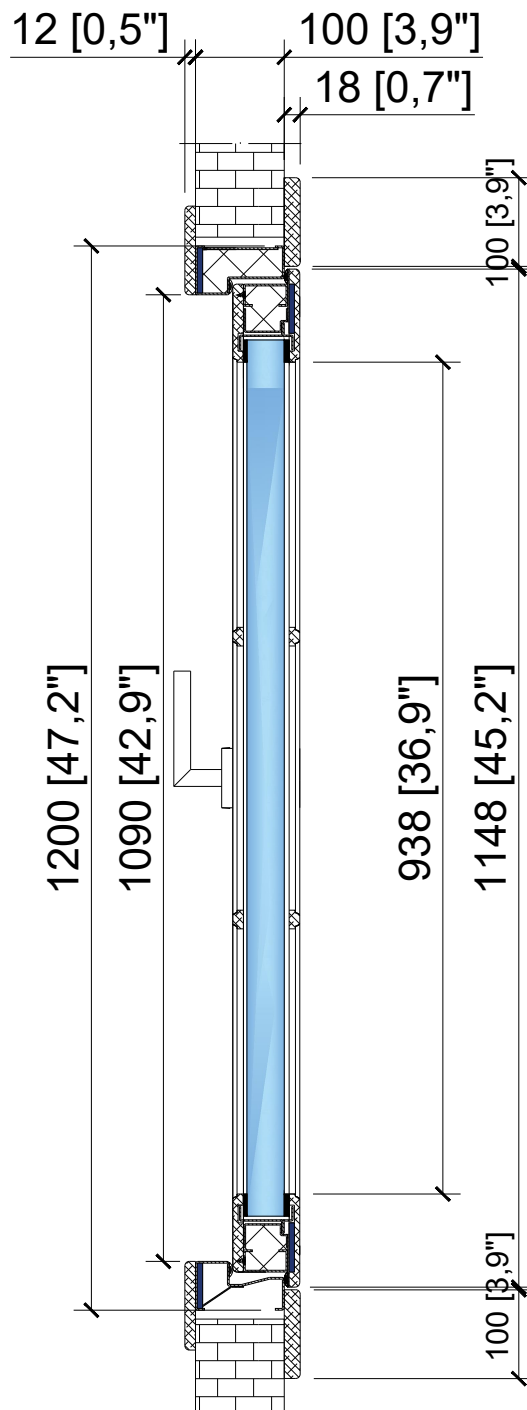


3mm ballistic steel

Horizontal Cut

Sheet 2	No. of sheets 4	SCALE: NOT TO SCALE
CAD dwg Ref. No. Door design FDE0104V2		
CLIENTS REF. NUMBER: Front Upper Bathroom		

DRAWN BY: M.B.	REQUESTED BY:	DATE: 19 March 2024
-------------------	---------------	------------------------

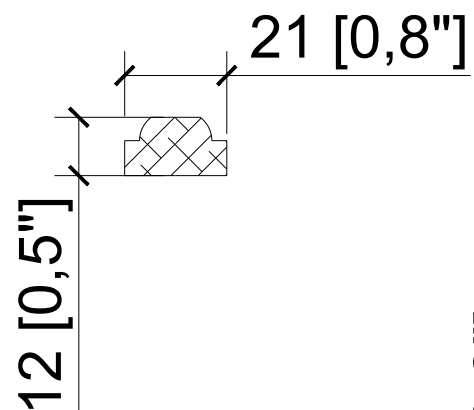


Vertical Cut

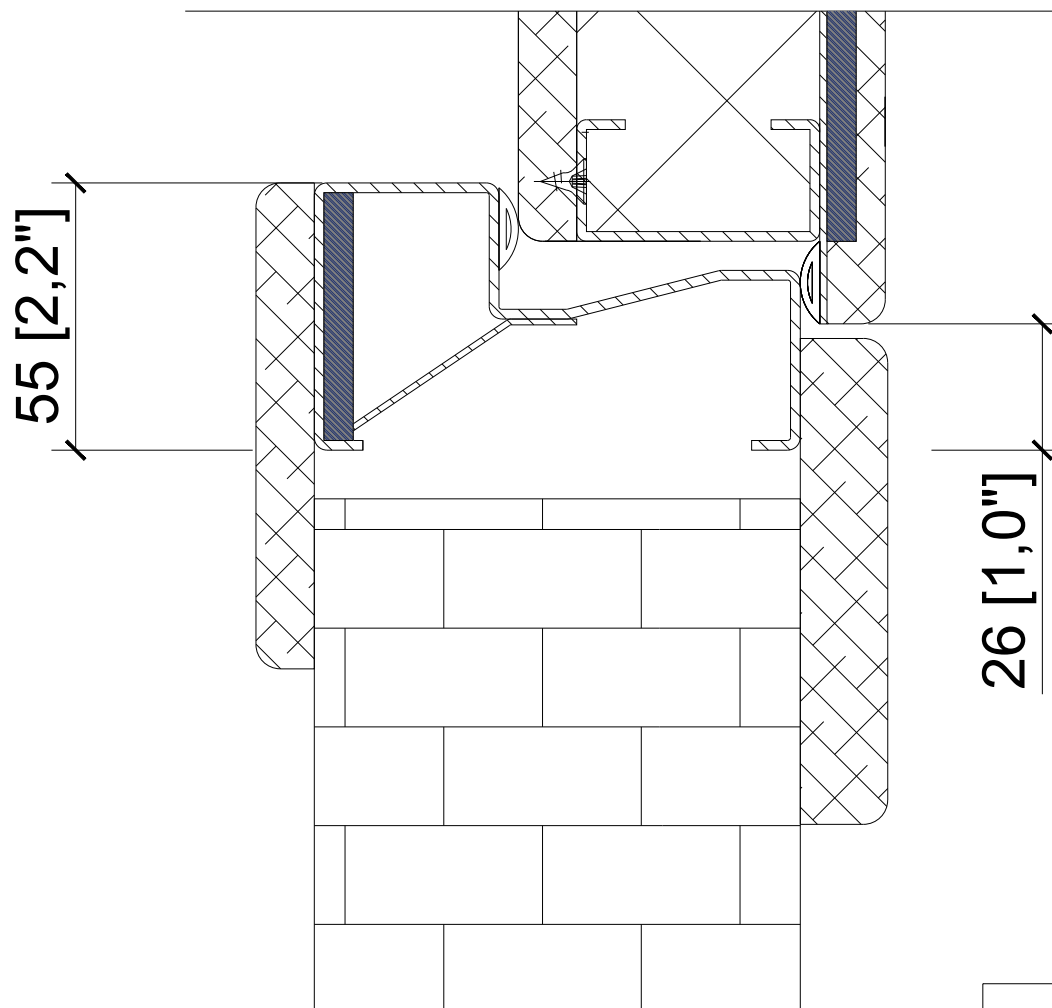
Sheet 3 No. of sheets 4 SCALE: NOT TO SCALE

DRAWN BY: M.B.	REQUESTED BY:	DATE: 19 March 2024	CAD dwg Ref. No. Door design FDE0104V2
			CLIENTS REF. NUMBER: Front Upper Bathroom

A-A



B-B



Door Cuts

Sheet 4		No. of sheets 4	SCALE: NOT TO SCALE
DRAWN BY: M.B.	REQUESTED BY:	DATE: 19 March 2024	CAD dwg Ref. No. Door design FDE0104V2
			CLIENTS REF. NUMBER: Front Upper Bathroom