

Project:	SAMPLE	Date:	
----------	---------------	-------	--

Window Name:	
Quantity:	1

Function	Window Style:	Fixed - Replica Casement
	Operability:	Fixed Window / Non-Opening
Security	Glass Level:	FB6 (UL 8) - Rifles
	Frame Level:	Armored + Ballistic
	Lock System:	Not Applicable - Fixed Window
Design	External Cladding:	Painted Eng. Wood
	External Finish:	RAL 9011 Matte
	Internal Cladding:	Painted Eng. Wood
	Internal Finish:	RAL 9011 Matte
	Hardware Color:	Black
	Window Frame Finish:	RAL 9011
	Window Handle:	Karcher Black
	Glass Finish:	Clear

		Inches	Millimeters
Outer FRAME SIZE	Frame Width	48	1219
	Frame Height	102	2591

Important Notes on Sizing:

1. You must have a Rough Opening (RO) adequately larger than the frame size listed above
2. Without an adequate RO, your window may not have enough room for adjustment and may malfunction
3. For fixed windows, your rough opening should be at least 1/2" wider and 1/2" taller than frame size

WINDOW HANDING

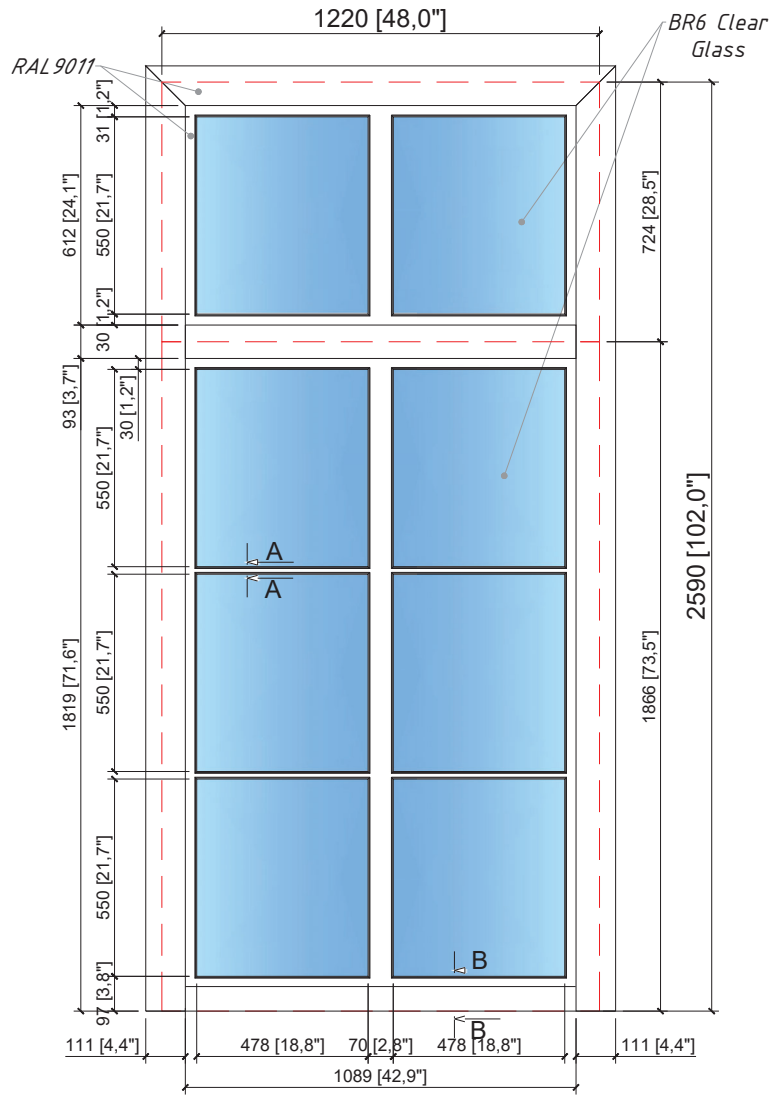
Diagram of View From Above:

#N/A

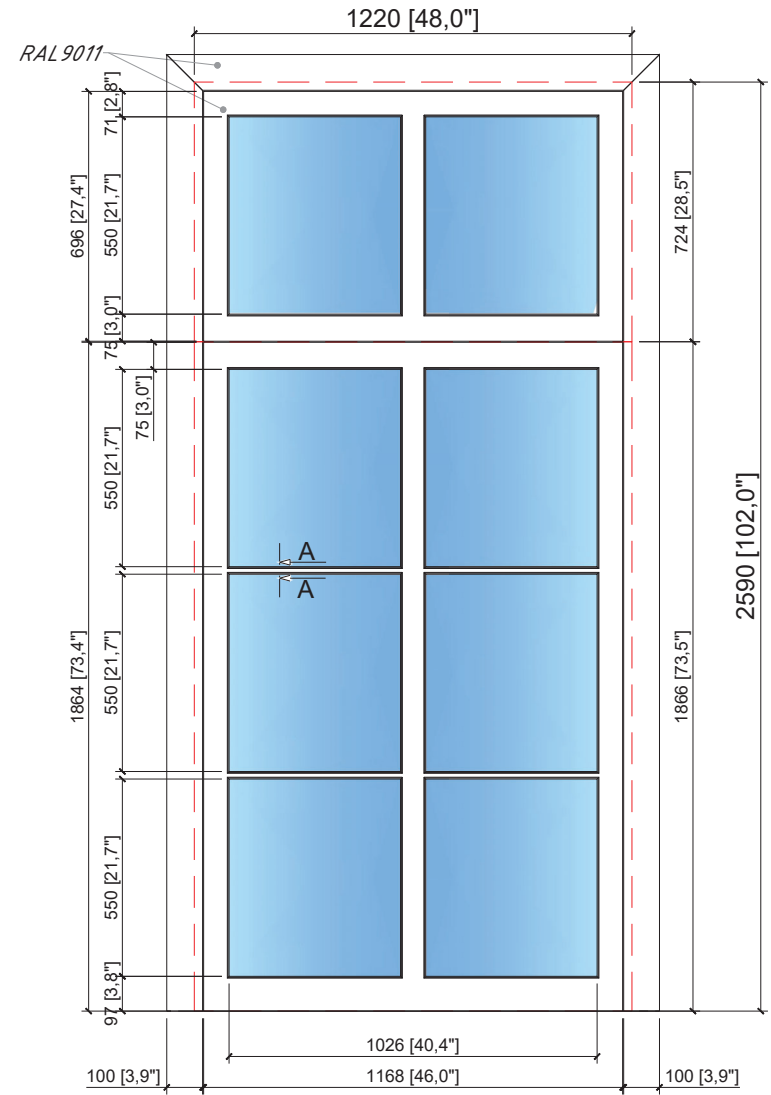
Notes:

This door is approved for production, as specified in this document and the following shop drawings, by:

External elevation



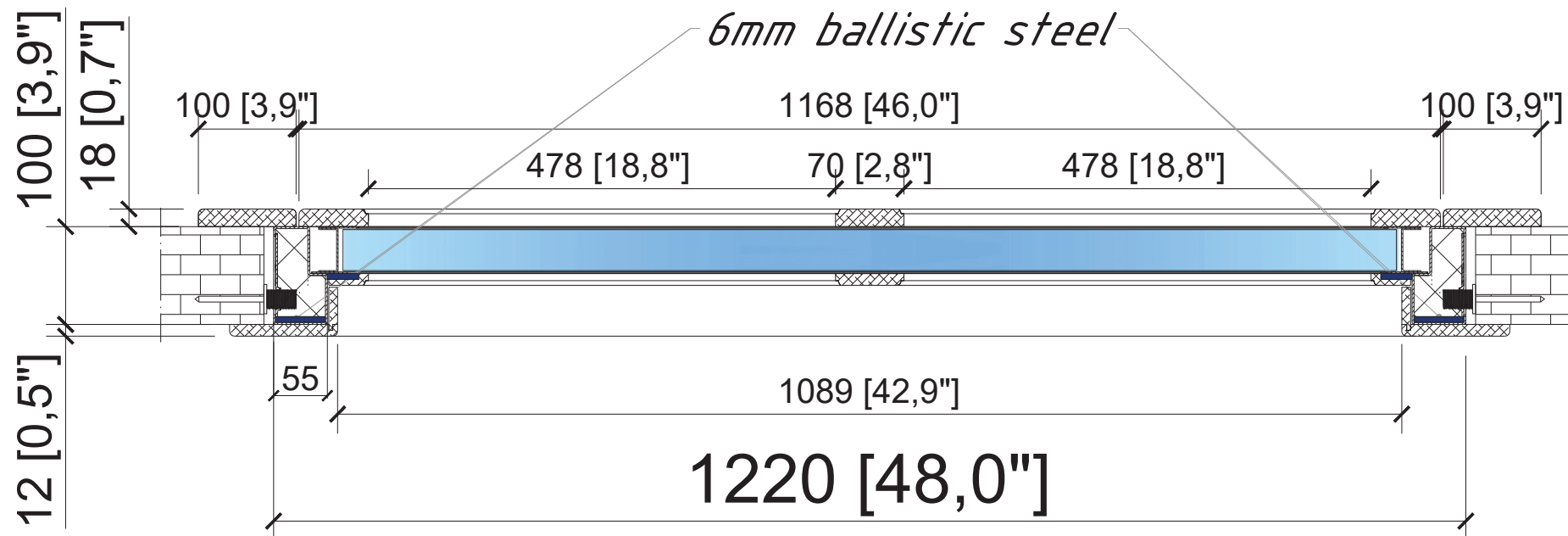
Internal elevation



External and Internal Elevations of the Door

Sheet 1 No. of sheets 4 SCALE: NOT TO SCALE

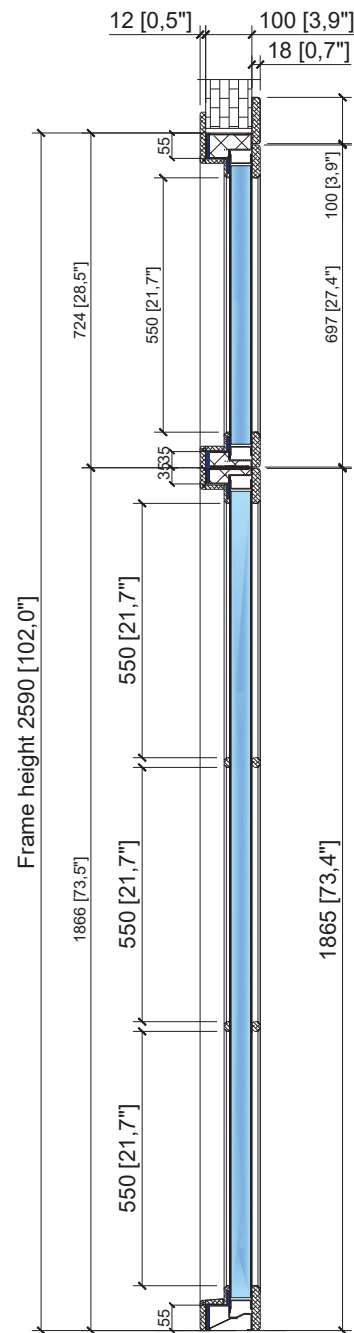
DRAWN BY: M.B.	REQUESTED BY:	DATE: 6 March 2024	CAD dwg Ref. No.
			CLIENTS REF. NUMBER: Fixed Living Room Window



Horizontal Cut

Sheet 2 No. of sheets 4 SCALE: NOT TO SCALE

DRAWN BY: M.B.	REQUESTED BY:	DATE: 6 March 2024	CAD dwg Ref. No.
			CLIENTS REF. NUMBER: Fixed Living Room Window

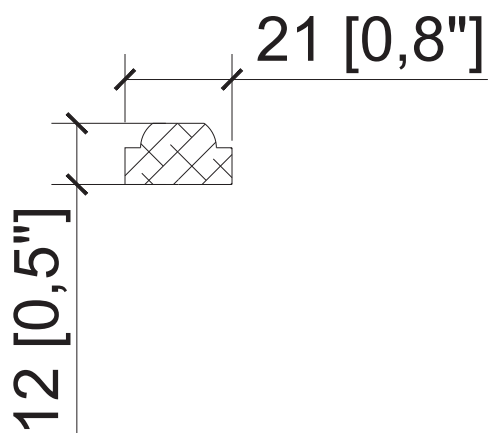


Vertical Cut

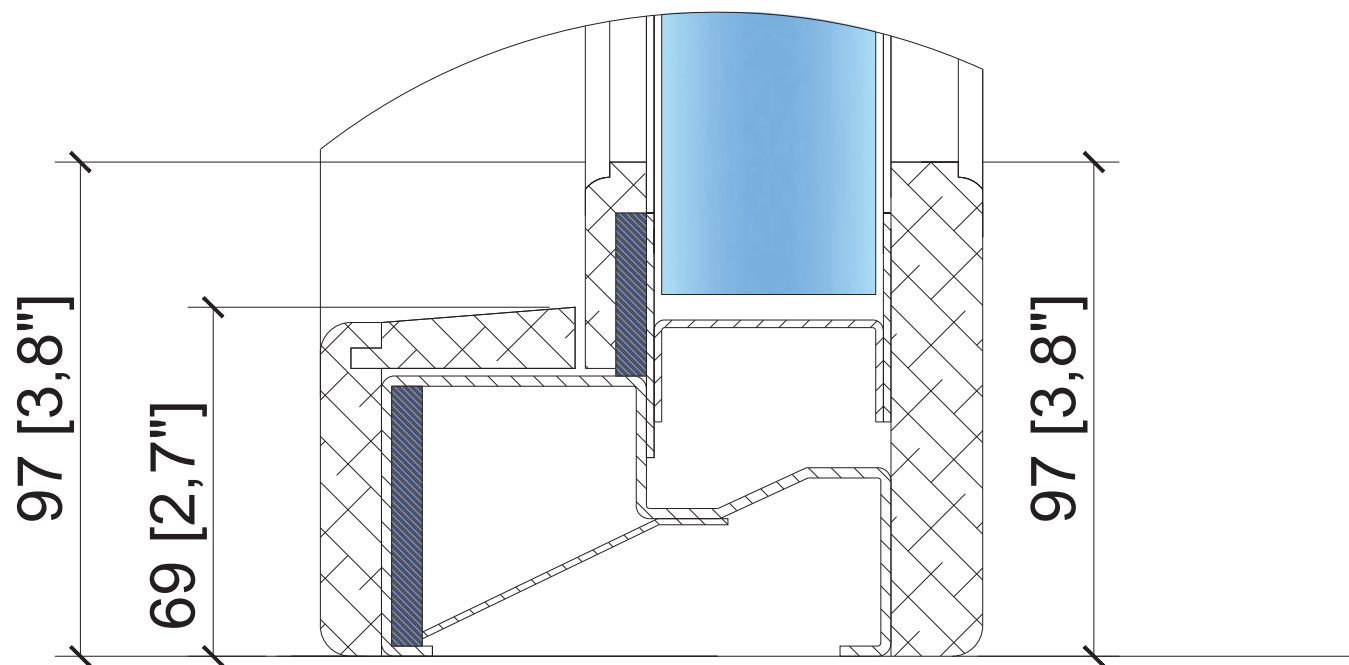
Sheet 3 No. of sheets 4 SCALE: NOT TO SCALE

DRAWN BY: M.B.	REQUESTED BY:	DATE: 6 March 2024	CAD dwg Ref. No.
			CLIENTS REF. NUMBER: Fixed Living Room Window

A-A



B-B



Door Cuts

DRAWN BY:
M.B.

REQUESTED BY:

DATE:
6 March 2024

Sheet 4

No. of sheets 4

SCALE: NOT TO SCALE

CAD dwg Ref. No.

CLIENTS REF. NUMBER:

Fixed Living Room Window