

Public Side / Attack Side

Private Side / Safe Side

External elevation

Internal elevation

## FRAME PROFILE

Dashed red line indicates perimeter of door frame. Shown covered by trim.

## CLEAR OPENING

Clear opening refers to the actual pass-through space when door is fully opened.

## LOCK CYLINDER

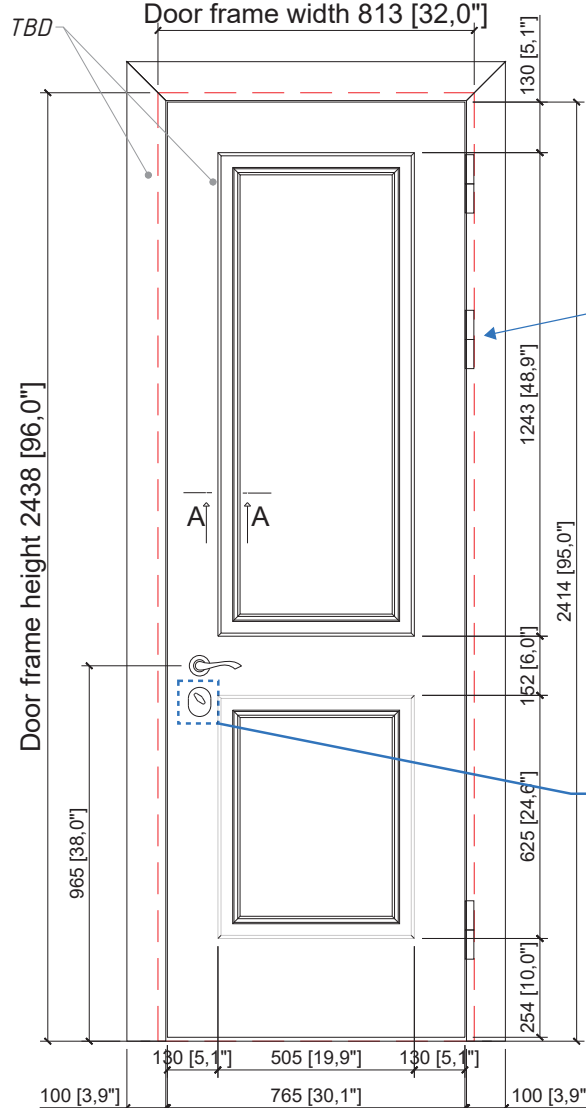
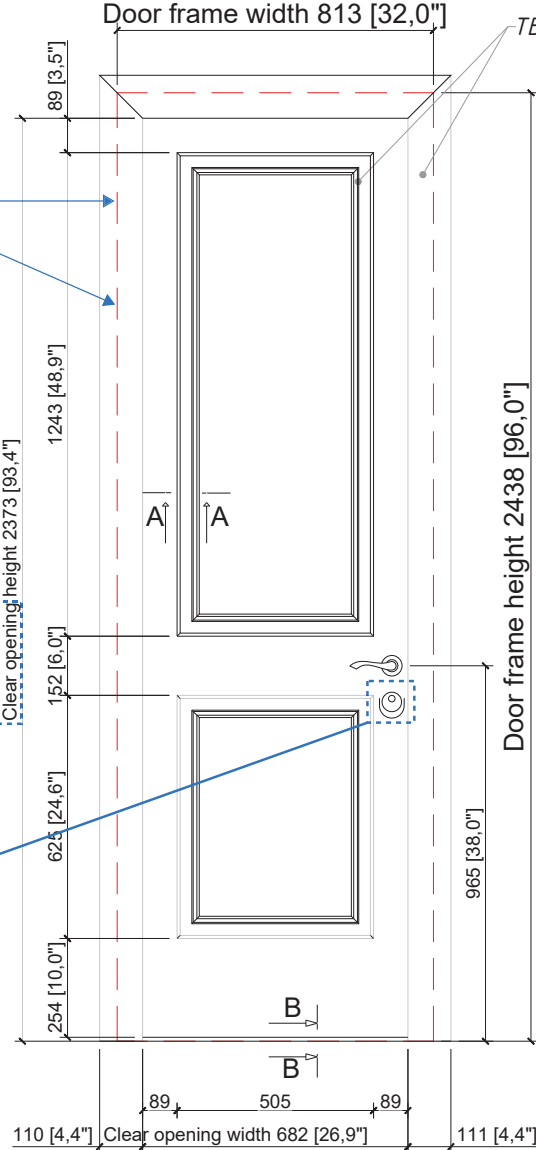
Keyhole, covered with cylinder defender, for locking/unlocking door with supplied keys

## HINGES

Drop-down hinge. Upper half welded to door leaf. Bottom half welded to frame. Quantity of hinges based on engineering requirements.

## THUMBTURN

Thumbturn is rotated to lock or unlock the door from the interior / safe side.



Inward opening:



## HANDING CONFIRMATION

Top-down view of how door will open in relation to the secure area.

For example, this sample door opens inwards to the safe room. The hinges are on the left when standing outside. This is a LH door.

DRAWN BY:	REQUESTED BY:	DATE:
M.B.		16 April 2024

SAMPLE SHOP DRAWINGS

### HINGES

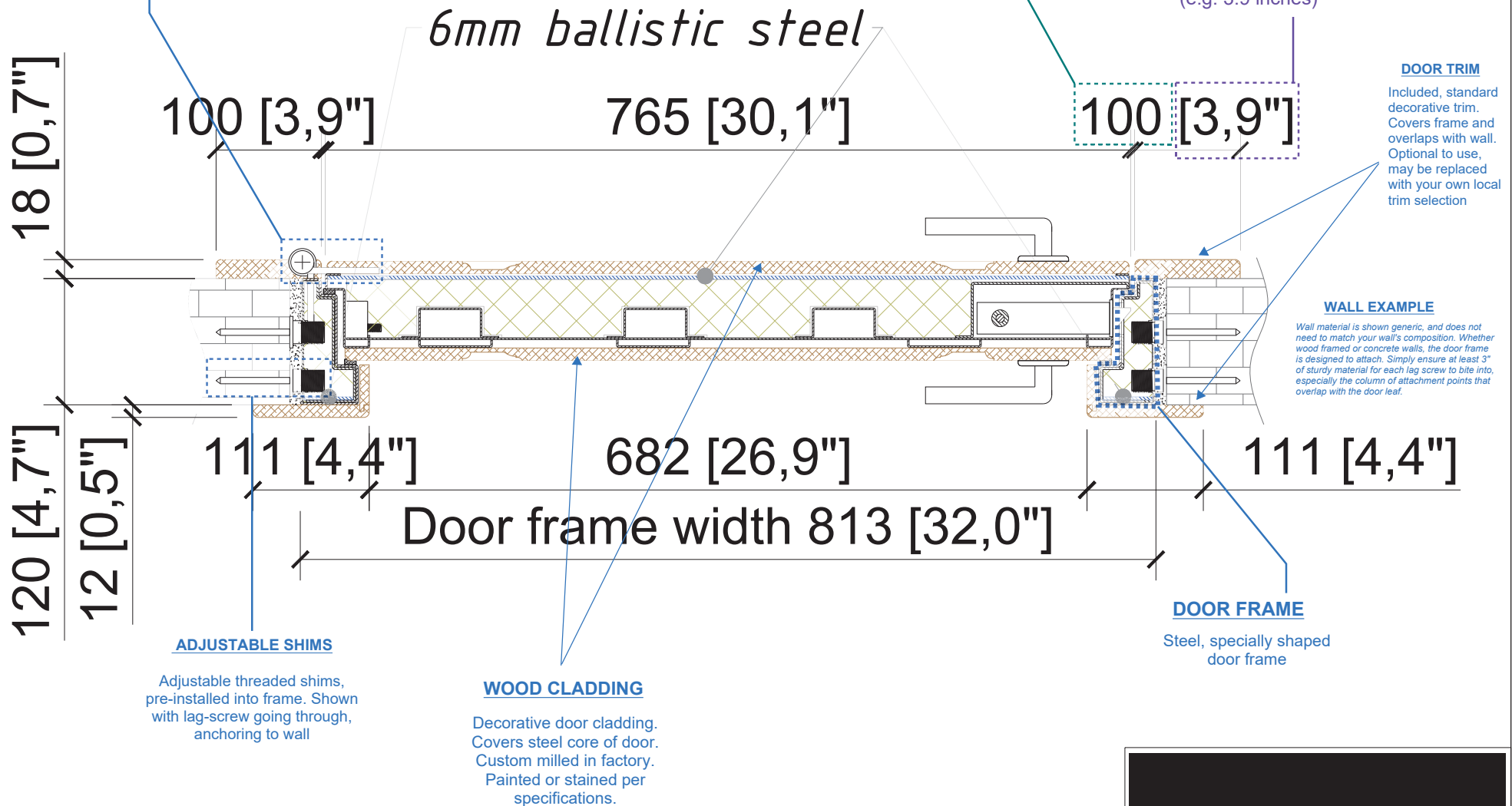
Drop-down  
Hinge. Upper half  
welded to door  
leaf. Bottom half  
welded to frame.

# A-A



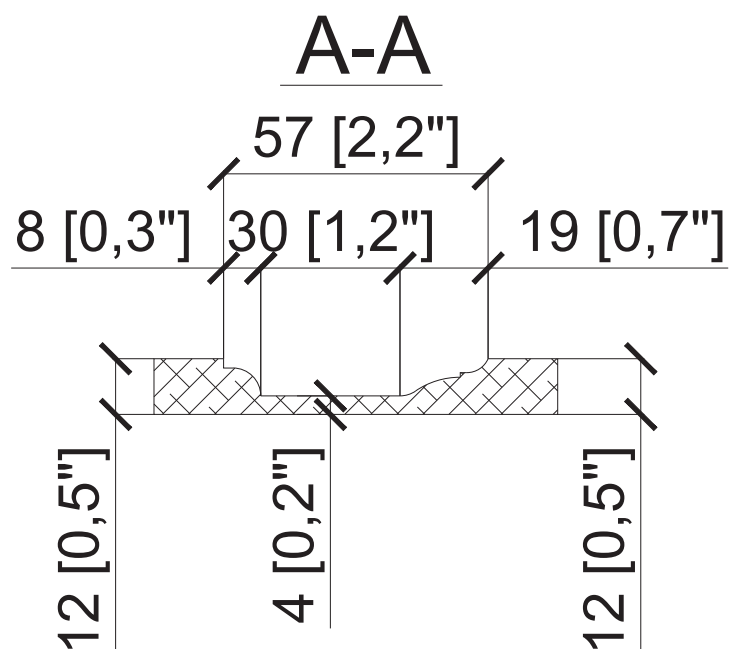
Measurement in  
millimeters (e.g. 100mm)

Measurement in inches  
(e.g. 3.9 inches)



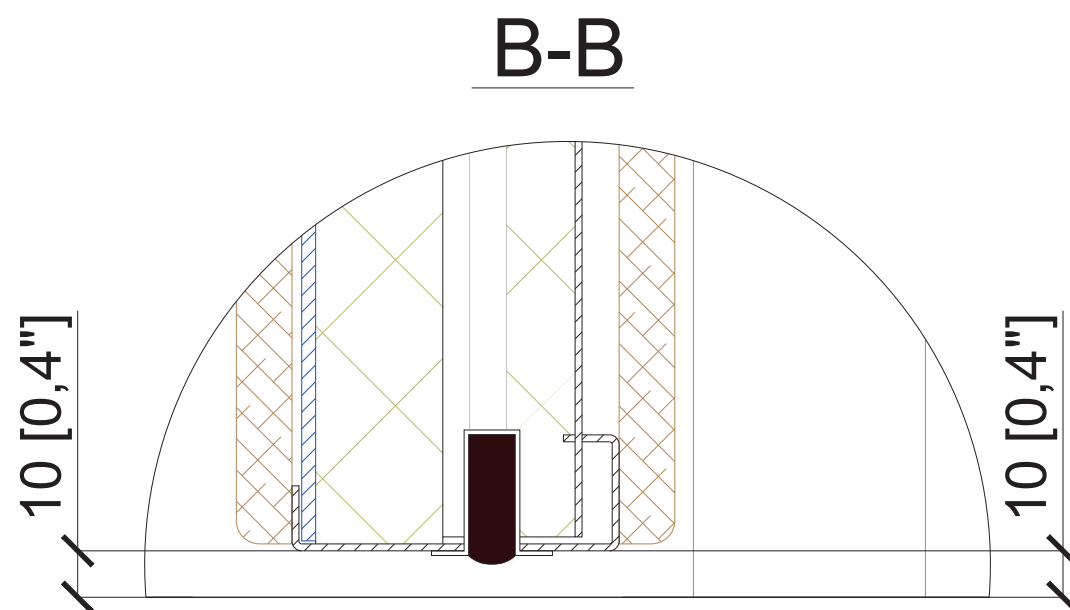
SAMPLE SHOP DRAWINGS

DRAWN BY:	REQUESTED BY:	DATE:
M.B.		16 April 2024



#### MILLING PROFILE

This is a detail view of the milling profile for the decorative cladding on the face of the door



#### DROP-DOWN SEAL

For doors without a threshold (most interior doors) a drop down seal is included standard. When the door is closed, a rubber seal drops down.

SAMPLE SHOP DRAWINGS

DRAWN BY:	REQUESTED BY:	DATE:
M.B.		16 April 2024